

Email: ukneqas@immqas.org.uk

Web Address: <https://www.immqas.org.uk>

UK NEQAS for Phospholipase A2 Receptor Antibodies

Distribution : 243

April 2024

Participant : 14489


117 out of 142 participants returned data for this distribution. 82% response rate.

Nil Responses

10732, 12254, 14036, 14036A, 92349A, 92959, 92961, 94109, 95373A, 95373, NOKLUS, PMS_NZ, PMS_AU, SEROBAC, SC_GP, QUAL, ORG, BIOG, INFO, CODEX, TVN, SEQC, TVNR, VAR, ANAND

Sample 243-1 was prepared from a pool of normal human serum.

Sample 243-2 was a sample from a patient with membranous glomerulonephritis with PLA2 receptor IgG antibodies.

Sample	Designated Response	Your Response	Score	OMIS
243-1	Negative	Negative	0	0
243-2	Positive	Positive	0	0
The current window of analysis comprises the previous six distributions			Total MIS	0 

Comments

Director Mrs D Patel / Dr R Sargur, Centre Manager Ms C Stanley
Telephone 0114 271 5715

Sheffield Teaching Hospitals 
NHS Foundation Trust

©COPYRIGHT: The data from UK NEQAS is confidential and may not be reproduced without the permission of the Organiser.




Sheffield Teaching Hospitals NHS Foundation Trust is a UKAS accredited proficiency testing provider No. 7795

The Total Misclassification scoring (**MIS**) system for the **qualitative** element of the scheme gives an indication of the number of instances where a laboratory's response is at variance with that defined for each specimen in a window of **six** distributions.

A panel of reference laboratories (10656, 10660, 10702, 14481, 14604) were in agreement in providing the target responses.

Laboratories have been given misclassification score (MIS) for each sample where they are at variance with the target response. The overall misclassification score (OMIS) now includes a running window of 12 samples over 12 months.

The categories of performance are:

	Total MIS
 Good	zero
 Adequate	1
 Poor	> 1

For further performance criteria information please see our website at <http://www.immqas.org.uk>.

If laboratories require further assistance please contact the centre.

Sample 243-1

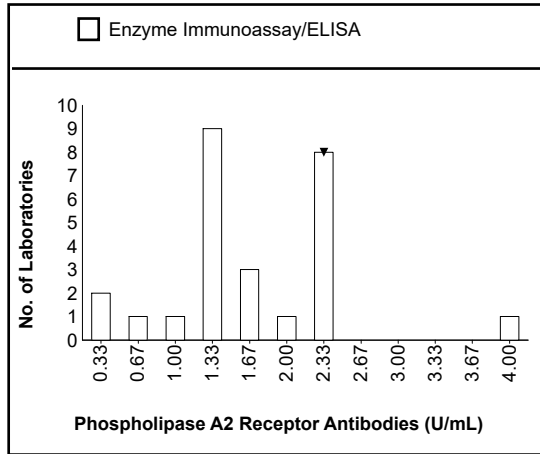
Your Results

Qualitative: Negative
 Quantitative: 2.0

Unit: RU/mL
 Method: Enzyme Immunoassay/ELISA
 Manufacturer: Euroimmun

	Returns	Positive	Negative	Mean U/mL	Range
Enzyme Immunoassay/ELISA	69	2	67		
U/mL					
Euroimmun	69	2	67	1.4	0.0 - 4.0
Indirect Immunofluorescence	48	1	47		
Titre					
Euroimmun	48	1	47	6.8	0.0 - 10.0

Please note: The statistical figures in the tables above are trimmed



Your Method: Enzyme Immunoassay/ELISA
 Your Manufacturer: Euroimmun
 Your Result: 2.0

Sample 243-2

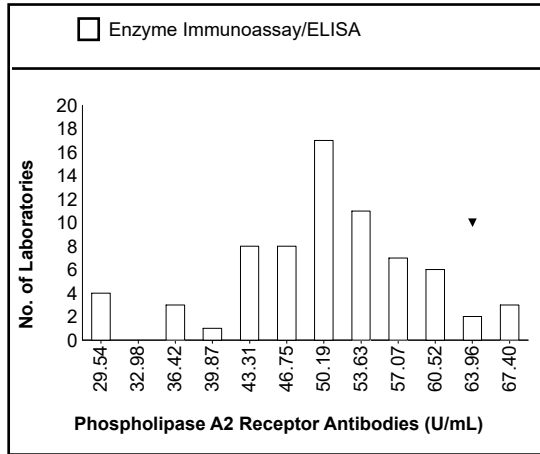
Your Results

Qualitative: Positive
 Quantitative: 63.5

Unit: RU/mL
 Method: Enzyme Immunoassay/ELISA
 Manufacturer: Euroimmun

	Returns	Positive	Negative	Mean U/mL	Range
Enzyme Immunoassay/ELISA	72	70	2		
U/mL					
Euroimmun	72	70	2	49.1	26.1 - 67.4
Indirect Immunofluorescence	45	45	0		
Titre					
Euroimmun	45	45	0	87.3	10.0 - 200.0

Please note: The statistical figures in the tables above are trimmed



Your Method: Enzyme Immunoassay/ELISA
 Your Manufacturer: Euroimmun
 Your Result: 63.5