

Email: ukneqas@immqas.org.uk

Web Address: <https://www.immqas.org.uk>

UK NEQAS for Phospholipase A2 Receptor Antibodies

Distribution : 225

August 2022

Participant : 14489


105 out of 126 participants returned data for this distribution. 83% response rate.

Nil Responses

10704, 14220, 14888, 93150, 94109, 94888, NOKLUS, PMS_NZ, PMS_AU, SEROBAC, ANAND, QUAL, ORG, BIOG, INFO, CODEX, TVN, SEQC, TVNR, VAR, SC_GP

Sample 225-1 was a sample made from pooled normal human serum.

Sample 225-2 was a sample made from pooled normal human serum.

Sample	Designated Response	Your Response	Score	OMIS
225-1	Negative	Negative	0	0
225-2	Negative	Negative	0	0
			Total MIS	0 

The current window of analysis comprises the previous six distributions




Comments

The Total Misclassification scoring (**MIS**) system for the **qualitative** element of the scheme gives an indication of the number of instances where a laboratory's response is at variance with that defined for each specimen in a window of **six** distributions.

A panel of reference laboratories (10656, 10660, 10702, 14481, 14604) were in agreement in providing the target responses.

Laboratories have been given misclassification score (MIS) for each sample where they are at variance with the target response. The overall misclassification score (OMIS) now includes a running window of 12 samples over 12 months.

The categories of performance are:

	Total MIS
 Good	zero
 Adequate	1 - 2
 Poor	> 2

For further performance criteria information please see our website at <http://www.immqas.org.uk>.

If laboratories require further assistance please contact the centre.

Sample 225-1

Your Results

Qualitative: Negative
 Quantitative: 0

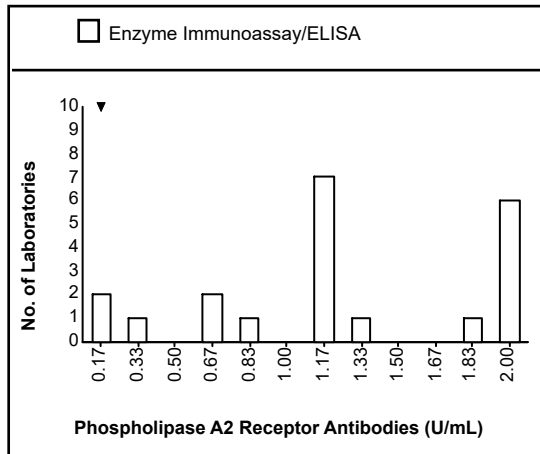
Unit: RU/mL

Method: Enzyme Immunoassay/ELISA

Manufacturer: Euroimmun

	Returns	Positive	Negative	Mean U/mL	Range
Enzyme Immunoassay/ELISA	59	0	59		
U/mL					
Euroimmun	59	0	59	1.2	0.0 - 2.0
Indirect Immunofluorescence	46	0	46		
Titre					
Euroimmun	46	0	46	6.7	0.0 - 10.0

Please note: The statistical figures in the tables above are trimmed



Your Method: Enzyme Immunoassay/ELISA
 Your Manufacturer: Euroimmun
 Your Result: 0

Sample 225-2

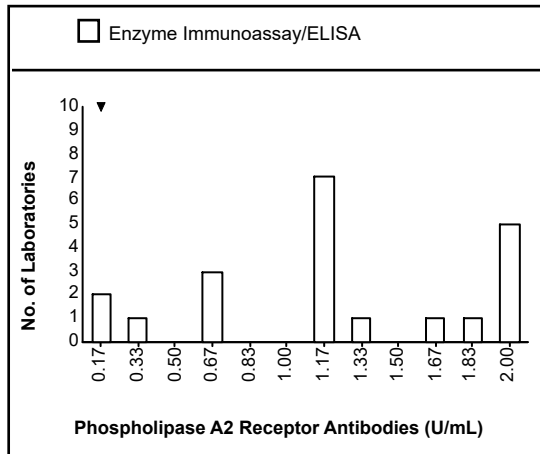
Your Results

Qualitative: Negative
 Quantitative: 0

Unit: RU/mL
 Method: Enzyme Immunoassay/ELISA
 Manufacturer: Euroimmun

	Returns	Positive	Negative	Mean U/mL	Range
Enzyme Immunoassay/ELISA	59	0	59		
U/mL					
Euroimmun	59	0	59	1.1	0.0 - 2.0
Indirect Immunofluorescence	46	0	46		
Titre					
Euroimmun	46	0	46	6.7	0.0 - 10.0

Please note: The statistical figures in the tables above are trimmed



Your Method: Enzyme Immunoassay/ELISA
 Your Manufacturer: Euroimmun
 Your Result: 0